

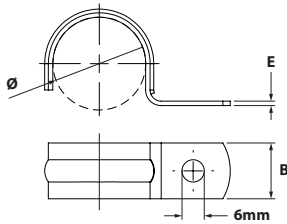
**GRAPA PUENTE SIMPLE 1 PATA**

S-SHAPED SAD. CLIP 1 TAB  
 AGRAFE SIMPLE 1 PATTE  
 BRÜCKE CLIP FÜR ROHRLEITUNG



CAJA / BOX / BOÎTE

CÓDIGO Code / Code	CÓDIGO Code / Code	MEDIDA Measure / Mesure	BxE	DC
<b>W1</b>	<b>W4</b>	Ø		
W1	W4	m.m.	m.m.	
GP1P08	-	8	15x1,2	100
GP1P10	-	10	15x1,2	100
GP1P12	GP1PA212	12	15x1,2	100
GP1P14	-	14	15x1,2	100
GP1P16	GP1PA216	16	15x1,2	100
GP1P18	GP1PA218	18	15x1,2	100
GP1P20	GP1PA220	20	15x1,2	100
GP1P22	GP1PA222	22	15x1,2	100
GP1P25	GP1PA225	25	15x1,2	100
GP1P26	-	26	15x1,2	100
GP1P28	GP1PA228	28	15x1,2	100
GP1P32	GP1PA232	32	15x1,2	100
GP1P40	-	40	15x1,2	50
GP1P42	GP1PA242	42	15x1,2	50
GP1P47	-	47	16x1,5	50



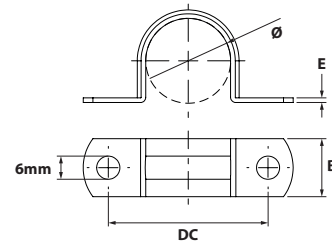
**GRAPA PUENTE SIMPLE 2 PATAS**

S-SHAPED SAD. CLIP 2 TABS  
 AGRAFE SIMPLE 2 PATTES  
 BRÜCKE CLIP FÜR ROHRLEITUNG



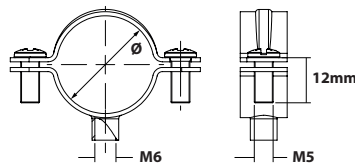
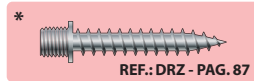
CAJA / BOX / BOÎTE

CÓDIGO Code / Code	CÓDIGO Code / Code	MEDIDA Measure / Mesure	BxE	DC
<b>W1</b>	<b>W4</b>	Ø		
W1	W4	m.m.	m.m.	m.m.
GP2P08	-	8	15x1	24,5 100
GP2P10	-	10	15x1	26 100
GP2P12	-	12	15x1	32,2 100
GP2P14	-	14	15x1	36,7 100
GP2P16	-	16	15x1	34 100
GP2P18	GP2PA218	18	15x1	40,3 100
GP2P20	-	20	15x1	41,5 100
GP2P22	GP2PA222	22	15x1,2	44 100
GP2P25	GP2PA225	25	15x1,2	48,5 100
GP2P26	GP2PA226	26	15x1,2	49,5 100
GP2P28	GP2PA228	28	15x1,2	51,5 100
GP2P32	-	32	16x1,5	56,5 50
GP2P40	-	40	16x1,5	61 50
GP2P42	GP2PA242	42	16x1,5	67,2 50
GP2P47	-	47	16x1,5	74,3 50
GP2P50	GP2PA250	50	16x1,5	74,4 50
GP2P63	-	63	16x1,5	94,2 50
GP2P75	-	75	16x1,5	106,6 50
GP2P90	-	90	20x2	122 50



**ABRAZADERA DE TUBO SIMPLE M-6 BICROMATADA**

YELLOW ZINC PLATED SIMPLE CLAMP M-6  
 COLLIER SERRAGE M-6 BICHROMATÉ  
 EINFACH KLEMM M-6 GELB VERZINKT



CAJA / BOX / BOÎTE

BICROMATADO / YELLOW ZP.

CÓDIGO Code / Code	MEDIDA Measure / Mesure	MEDIDA Measure / Mesure	Tornillo recomendado * Recommended Screw Vis recommandé	DC
	Ø			
	m.m.	Inch.	m.m.	
ABTS610	10	1/2	DRZ - M6x30	100
ABTS612	12	1/4	DRZ - M6x30	100
ABTS615	15	-	DRZ - M6x30	100
ABTS616	16	3/8	DRZ - M6x30	100
ABTS618	18	-	DRZ - M6x30	100
ABTS622	22	1/2	DRZ - M6x30	100
ABTS626	26	3/4	DRZ - M6x30	100
ABTS632	32	-	DRZ - M6x30	50
ABTS635	35	1"	DRZ - M6x30	50

AUTOSERVICIO / SELF-SERVICE / AUTO-SERVICE

BICROMATADO / YELLOW ZP.

CÓDIGO Code / Code	MEDIDA Measure / Mesure	DC
	Ø	
	m.m.	
BFABTS610	10	20 12
BFABTS612	12	20 12
BFABTS615	15	20 12
BFABTS618	18	15 12
BFABTS622	22	10 12
BFABTS626	26	4 12
BFABTS632	32	4 12

**CÓDIGO DE CALIDAD DEL MATERIAL UTILIZADO / QUALITY CODE OF THE MATERIAL USED**

- W1** - Totalmente en acero cincado / Fully zinc plated steel
- W2** - Cinta y cabeza acero inox. A-2 tornillo acero cincado / Band & head in S.S. AISI 304 zinc plated screw
- W4** - Totalmente en acero inoxidable A-2 / Fully stainless steel AISI 304
- W5** - Totalmente en acero inoxidable A-4 / Fully stainless steel AISI 316

PEDIDO MÍNIMO 1 EMBALAJE / MINIMUM ORDER 1 PACKAGING  
COMMANDE MINIMALE 1 EMBALLAGE / MINDESTBESTELLMENGE 1 VERPACKUNG